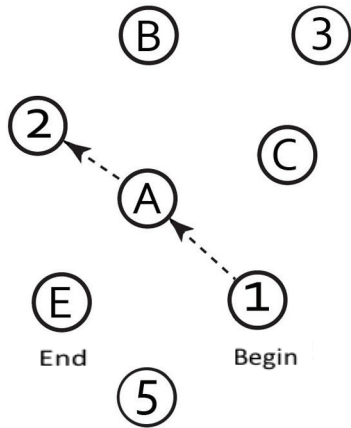
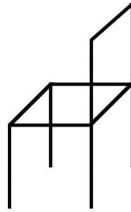


**VISUOSPATIAL / EXECUTIVE**



Copy chair



Draw CLOCK (Ten past nine)  
(3 points)

POINTS

[ ]

[ ]

[ ]

[ ]

[ ]

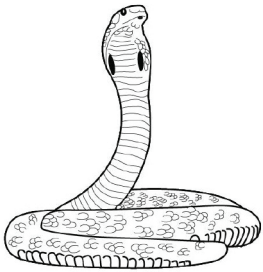
Contour

Numbers

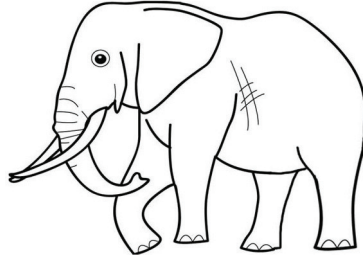
Hands

\_\_/5

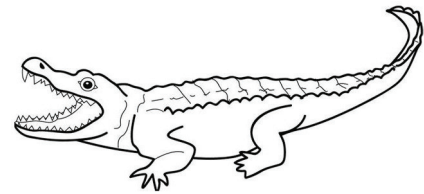
**NAMING**



[ ]



[ ]



[ ]

\_\_/3

**MEMORY**

Read list of words, subject must repeat them. Do 2 trials, even if 1st trial is successful. Do a recall after 5 minutes.

HAND

NYLON

PARK

CARROT

YELLOW

1st TRIAL

2nd TRIAL

NO POINTS

**ATTENTION**

Read list of digits (1 digit / sec.).

Subject has to repeat them in the forward order. [ ] 8 1 5 2 4

Subject has to repeat them in the backward order. [ ] 2 4 7

\_\_/2

Read list of letters. The subject must tap with his hand at each letter A. No points if ≥ 2 errors.

[ ] F B A C M N A A J K L B A F A K D E A A A J A M O F A A B

\_\_/1

Serial 7 subtraction starting at 70.

[ ] 63

[ ] 56

[ ] 49

[ ] 42

[ ] 35

4 or 5 correct subtractions: 3 pts, 2 or 3 correct: 2 pts, 1 correct: 1 pt, 0 correct: 0 pt

\_\_/3

**LANGUAGE**

Repeat: The robber of the gray car was stopped by the police. [ ]

The student went back to school without his books and pencils. [ ]

\_\_/2

Language Fluency. Name maximum number of words in one minute that begin with the letter S. [ ] \_\_\_\_\_ (N ≥ 11 words)

\_\_/1

**ABSTRACTION**

Similarity between e.g. banana - orange = fruit [ ] bed - table [ ] letter - telephone

\_\_/2

**DELAYED RECALL**

(MIS)

Has to recall words WITH NO CUE

HAND

NYLON

PARK

CARROT

YELLOW

Points for UNCUED recall only

\_\_/5

Memory Index Score (MIS)

X3

Category cue

X1

Multiple choice cue

MIS = \_\_/15

**ORIENTATION**

[ ] Date

[ ] Month

[ ] Year

[ ] Day

[ ] Place

[ ] City

\_\_/6